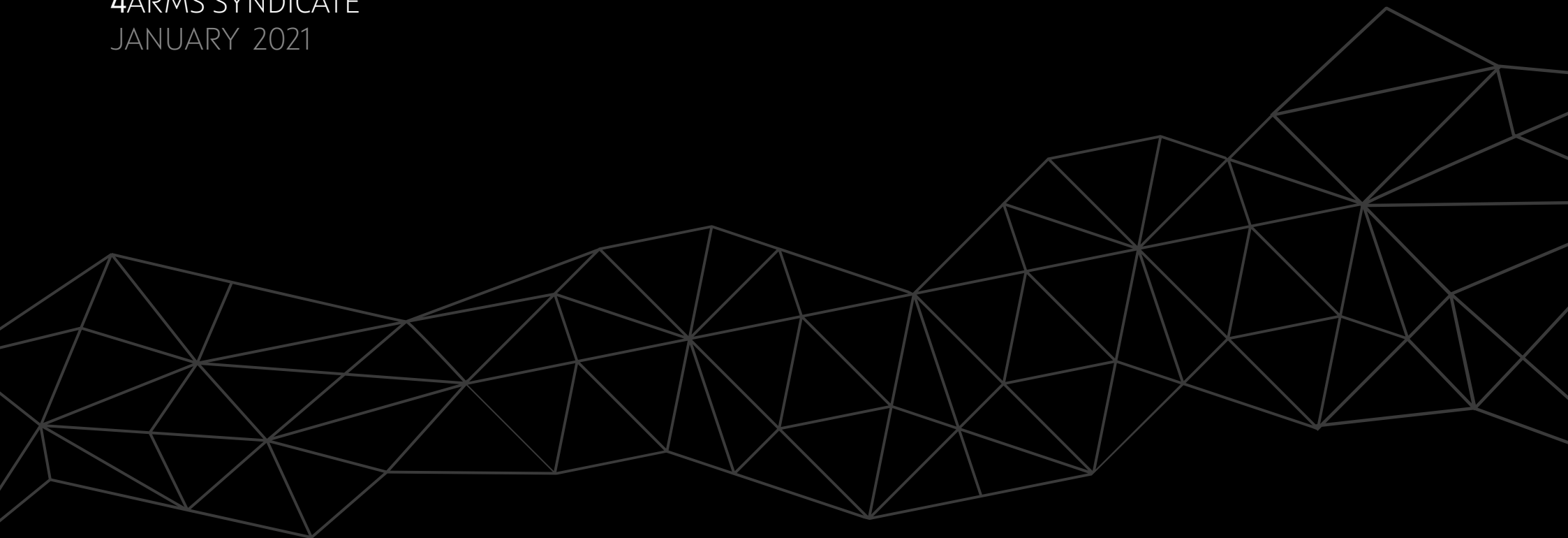


4 ARMS SYNDICATE
ARCHITECTS AND DESIGNERS

COMPANY PROFILE

4ARMS SYNDICATE
JANUARY 2021



Contents



The details are not the details. They make the design.

a renowned designer - Charles Eames

Our Services

Residential Projects

Commercial Projects

CAD services

Entertainment Projects

Graphic Designing and Branding

Our Services

ARCHITECTURAL DESIGNING

Site Plans

Floor Plans

Elevations

Sections

Working Drawings

3D Visualization

3D Walkthroughs

Interior Designing

CAD SERVICES

2D CAD Drafting

M.E.P Drawings

3D Models

Specialised Kitchen Design

Domestic & Industrial Kitchen

GRAPHIC DESIGNING

Theme Design

Logos

Business Cards

Brochures / Flyers

Web Designing

ENTERTAINMENT CENTERS

Concept Planning

Attraction Mix

Theme Development

Feasibility and Finacial Study

Detail Designing

Project Planning

Development & TurnKey Solutions

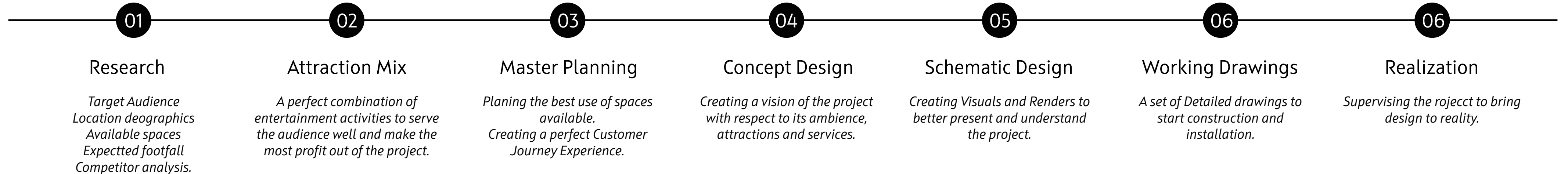
Marketing Strategies

Operations Consultations



ENTERTAINMENT PROJECTS

Roadmap to a perfect Location Based Entertainment.



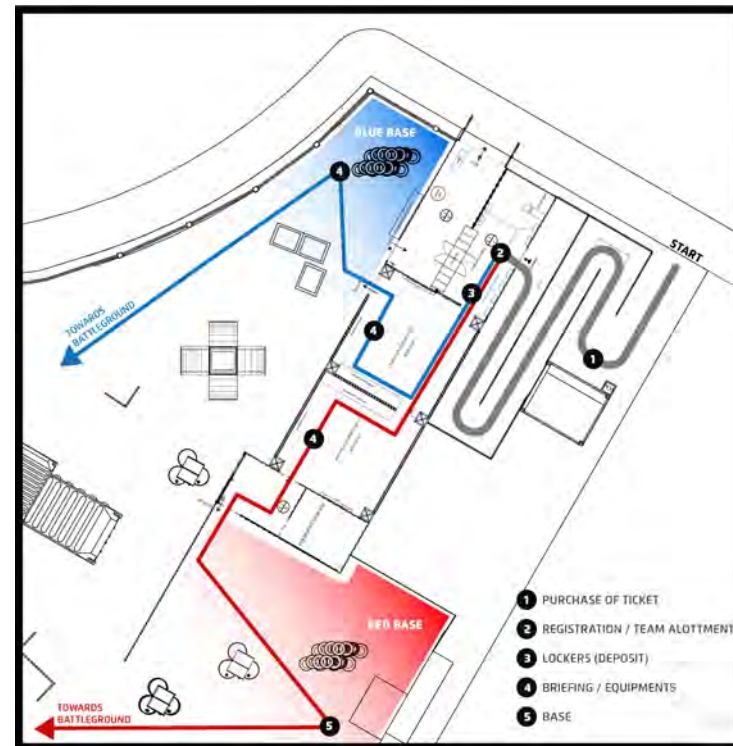
Attraction Mix

A perfect combination of entertainment activities to serve the audience well and make the most profit out of the project.



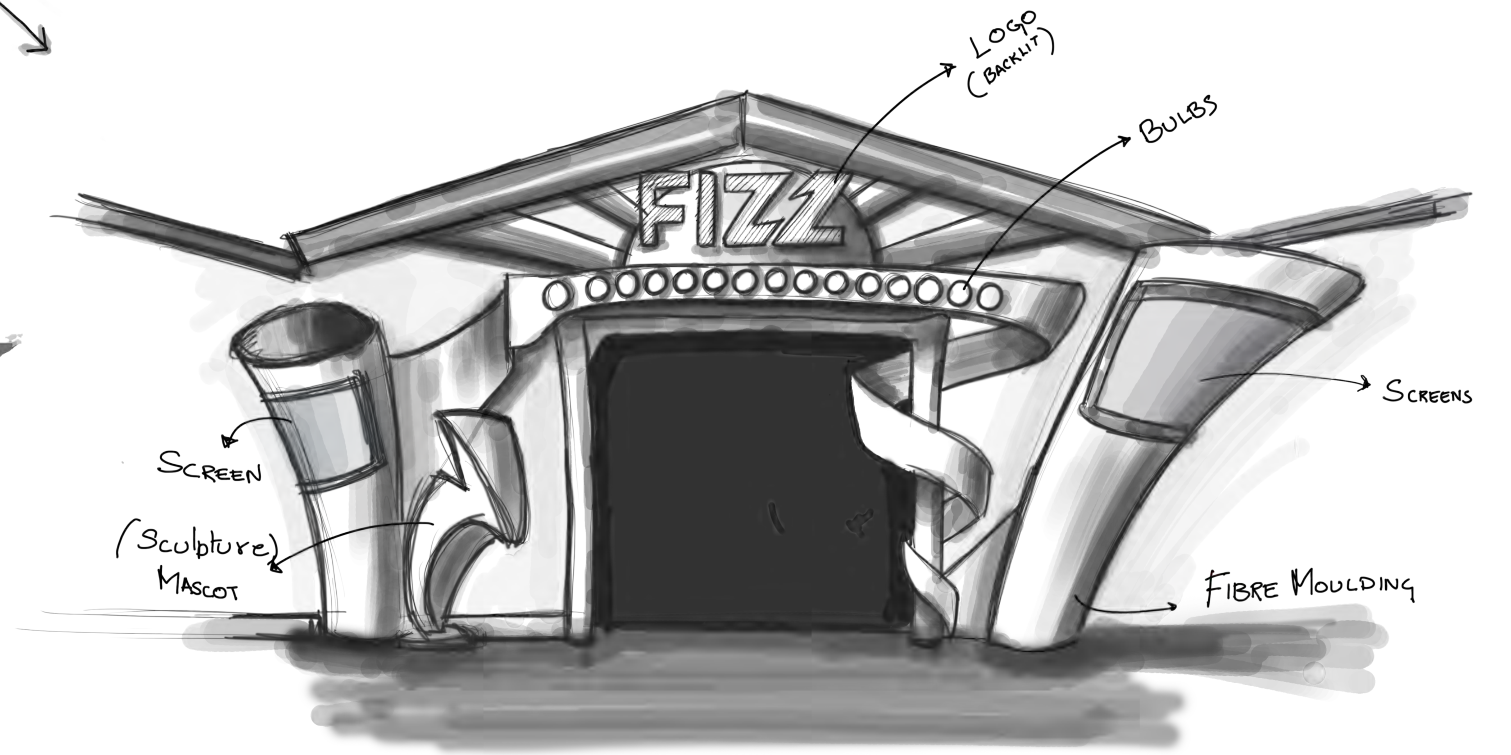
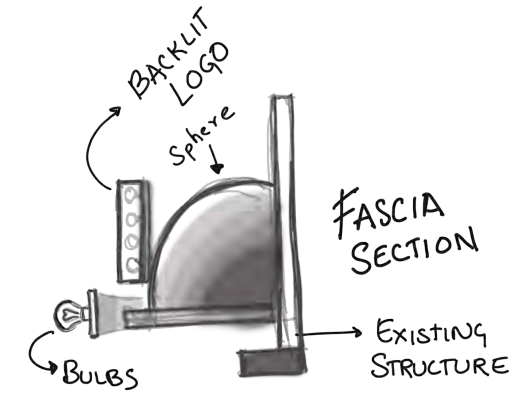
MasterPlanning

*Planing the best use of spaces available.
Creating a perfect Customer Journey Experience.*



Concept Designs

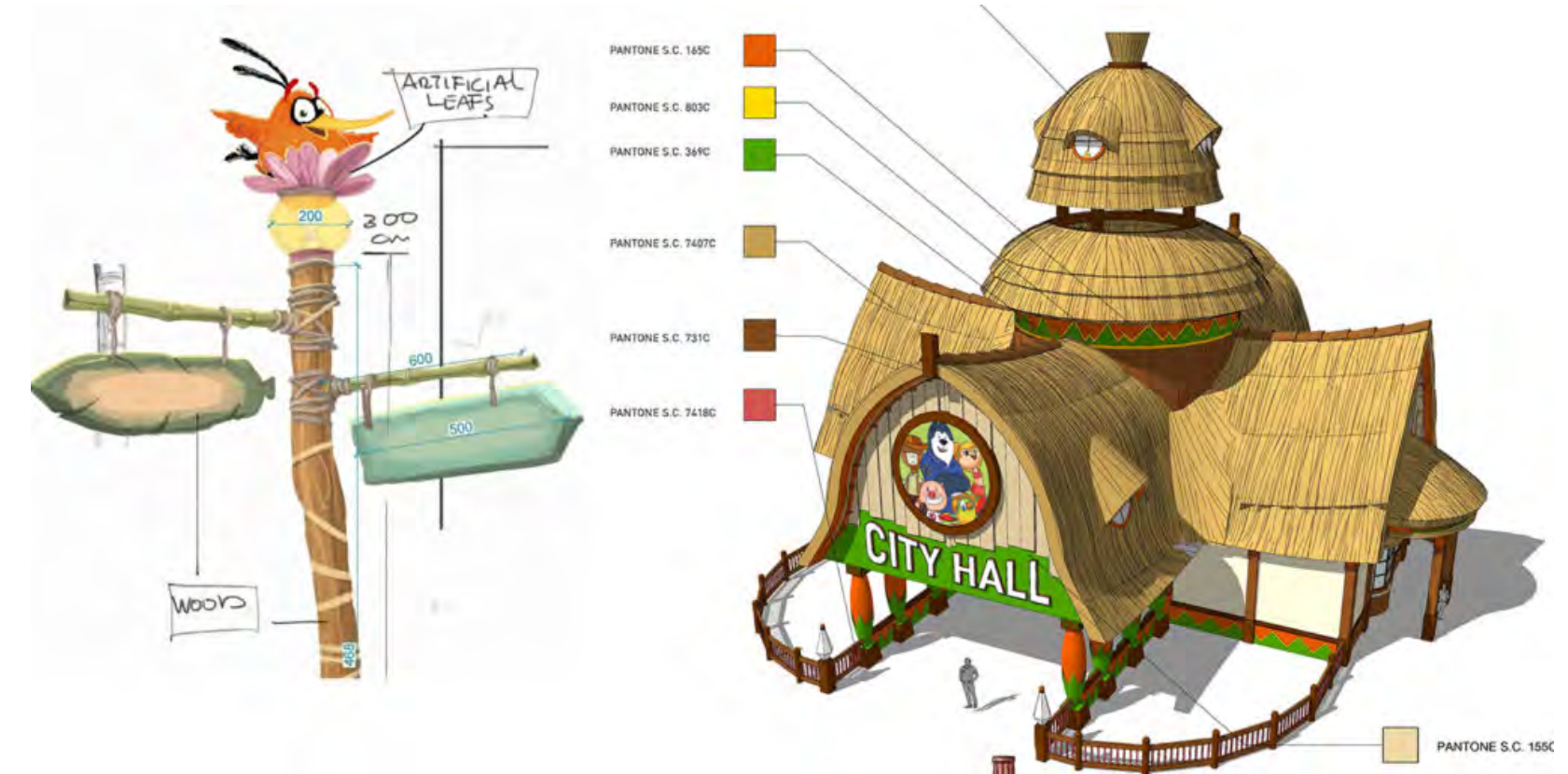
The general entertainment idea and how this will be reflected in the project is created at this stage. The project's (signature) rides and attractions are selected and the park's identity (logo, mascot, name) is created and the theming direction and look and feel is brought to life.



Schematic Design

Schematic design ensures that the design concept and story is present in every corner of the entertainment project and that the complete park has been designed on a schematic level.

The facility plans show the impact of the design on the site while item design clearly shows how small items, interiors, walls, etc. will look like.





Realization

The realization is one of the most important phases in your entertainment project development. Here the designs are brought to reality.

4 ARMS can assist you with procurement services, project management and art direction services till a complete turnkey realization. With our experience and professional approach the DNA from the entertainment project is truly realized!.





FIZZ

Fizz Hawa is a one-stop entertainment solution, catering to children of any age, toddlers to teenagers. Concept Planning, spacial designing and visualisation processes were carried out in-house at 4ARMS.



Interior views

With energetic colours and bright lighting, FIZZ Hawa engorsses its customers into the zone. The backdrops and the lighting have been strategically designed and placed to lay maximum emphasis on the inflatables.



LAMBEE

Lambee is a chain of Soft play Arenas targeting Kids of ages 3-11 years.
Lambee Provides Edutainment activities for kids.
4ARMS Syndicate have created the Elevations and Interiors of all the brands
and help the facility in making facinating experiences through its design.





RESIDENTIAL PROJECTS



Aarna Homes

A spectacular residential project in Amravati, Andhra Pradesh. The project comprises of Four towers & 300 flats with well planned Amenities; Parks, Grocery stores, Gym, Spa, Convention Hall, Swimming pool & a Mini Theatre for the Residents.



SITE LAYOUT



NIGHT VIEW

Interiors

Your home should tell the story of who you are. Hence, we ensured that the interior design is done in a strategic, functional and aesthetically pleasing way. It reflects the warmth, exquisiteness, and comfort.



BEDROOM



MASTER BEDROOM



LIVING AREA



BEDROOM 2



BEDROOM 3



LIVING AREA



DINING AREA

Residence Modules

Aarna Homes is a project that will change the skyline of Amravati. Providing luxury, modernity and a new height to the upcoming city. This project is a perfect blend of form & function.



MODULE 1 WEST



MODULE 1 EAST



MODULE 2 EAST



MODULE 2 WEST





Omer Villa

This modern villa, design by 4ARMS, is located in a new suburb Hyderabad. The dynamic architecture is characterized by it's dark colors, wooden grooves and large cantilevering window openings. Oriented towards east, the house is designed to enjoy the view of the surroundings.



EXTERIOR



NIGHT VIEW



Low-cost Villa

This House, a weekend retreat, is a platonic perfection of order gently placed in Chevella, Hyderabad. Just right outside of Gandipet on a 1 acre site with a lake to the south, the glass pavilion takes full advantage of relating to its natural surroundings, achieving the concept of a strong relationship between the house and nature.





Spanish Villa

This residential project is a blend of Arabic and Spanish architecture, signifying the relation between the two. Elements from both realms of architecture are encapsulated meticulously in this project located in Riyadh, KSA.



ENTRANCE



FACADE DETAILS





COMMERCIAL PROJECTS



Village Restaurant

Village restaurant is an authentic Inidna, Chinese & Continental restaurant which is a perfect blend of traditional & contemporary architecture. A popular attraction in Jeddah, Saudi Arabia, the restaurant serves 500-600 customers a day.



RECEPTION



ENTRANCE

Interiors

The project is a renovation based on minimalism , with an essence of wooden interiors to maintain a classic environment. The lighting and furnishing has been thoughtfully set, for the customer to comfortably lounge, providing a vividly luxurious experience.



EAST DINING



CENTRAL DINING



LOUNGE



WEST DINING



SEATING AREAS



The interior comprises of perfectly angulated wooden louvres which blend with the brushed marble flooring, giving the restaurant an exquisite look complementing with the sublte interior landscape.

Sanitary Showroom

Located in the Holy city of Makkah, this commercial project is a high end sanitary showroom, one of its kind in the city. The essence of luxury, modernity and contemporariness has been followed throughout the design of the showroom.



BASIN DISPLAY

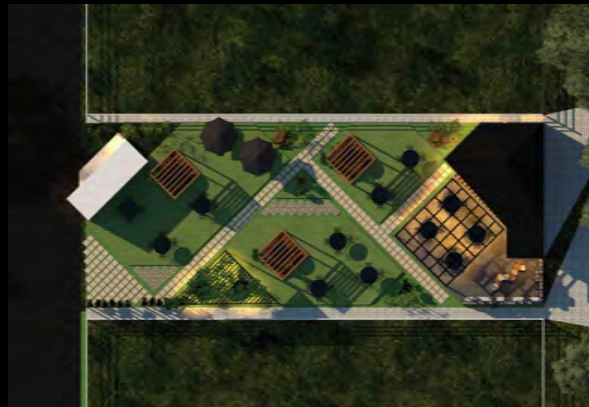


TOILET SETUPS



Nasr Polo

Having a refreshing & rejuvenating lunch after horseriding is surely a privilege, and we made it even more special. The Garden Restaurant serves the riders in the famous Nasr - Polo Club located in the lush green vicinity of Gandipet, Hyderabad.



SITE LAYOUT



NIGHT VIEW



Cafeteria



The restaurant is a landmark, not just for horse enthusiasts, but nature-lovers as well. This is one of the most nature-integrated restaurants in the city.

Exterior

The project required us to be highly thoughtful about the fragile environment of the place. It needed careful integration with the typology of the existing structure. The completed project is an outcome of the holistic approach that has been made.



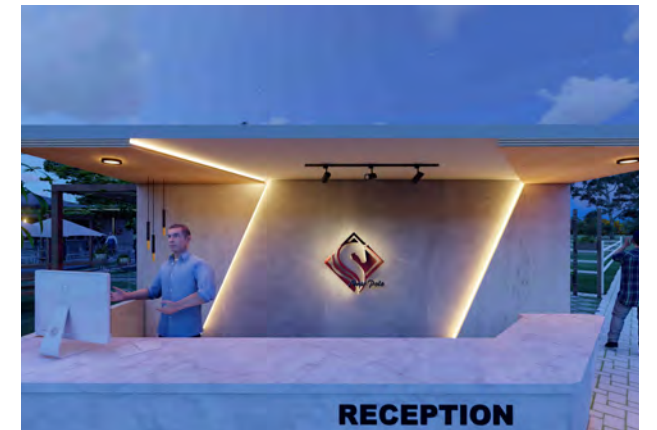
FRONT VIEW



ENTRANCE



EAST VIEW



RECEPTION DESK



CAD SERVICES

Plans

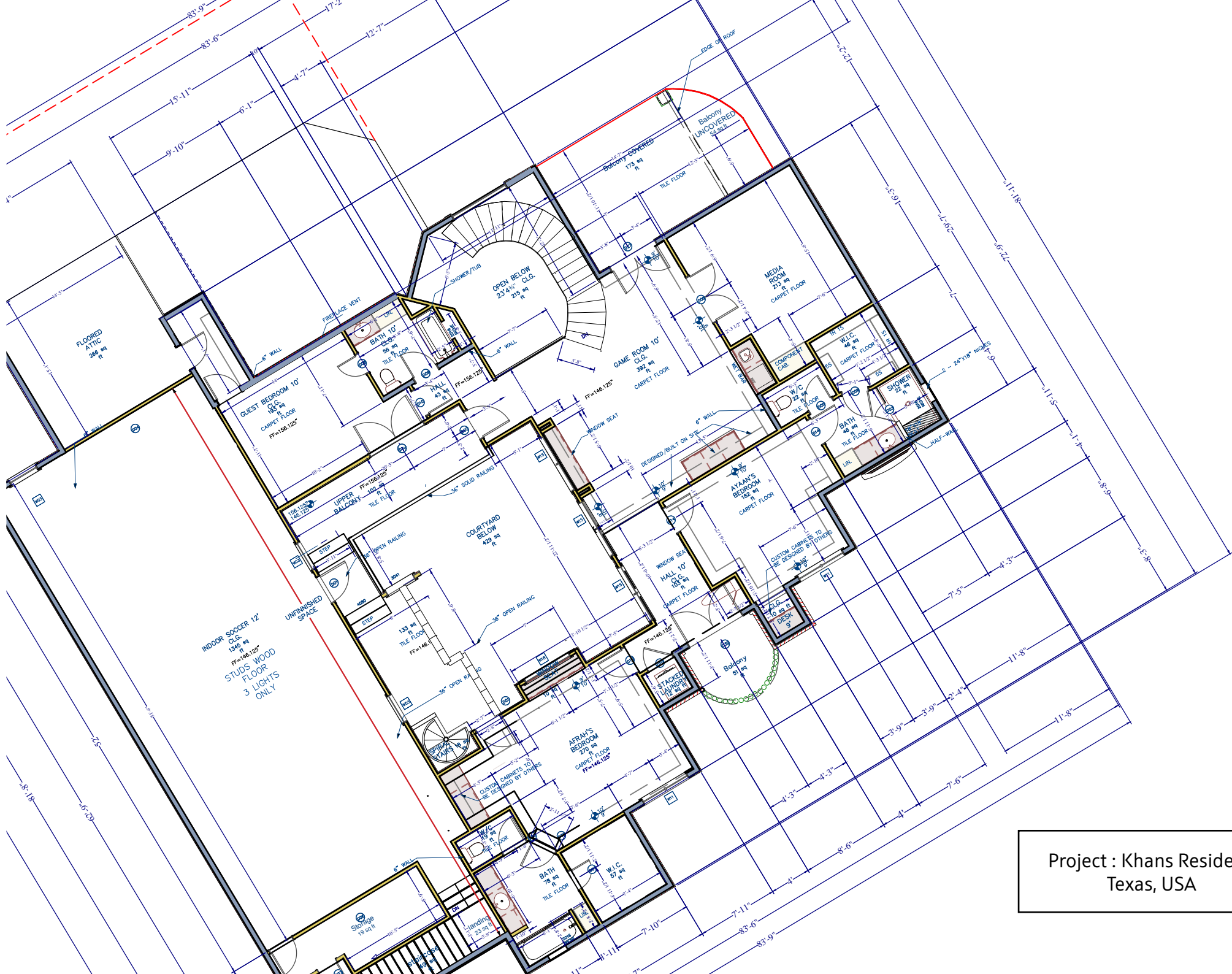
Notes : General

- All discrepancies between drawings and site conditions to be brought to the immediate attention of the designer.
- All power outlets to be mounted in partition 300mm. above finish.
- All ME queries to be forwarded to ME consultant. These drawings are to be used for information only and co-ordinated with ME drawings.
- All the AV power requirements to be provided by AV Consultant.
- Data power risers to be indicated in the drawings by consultant.

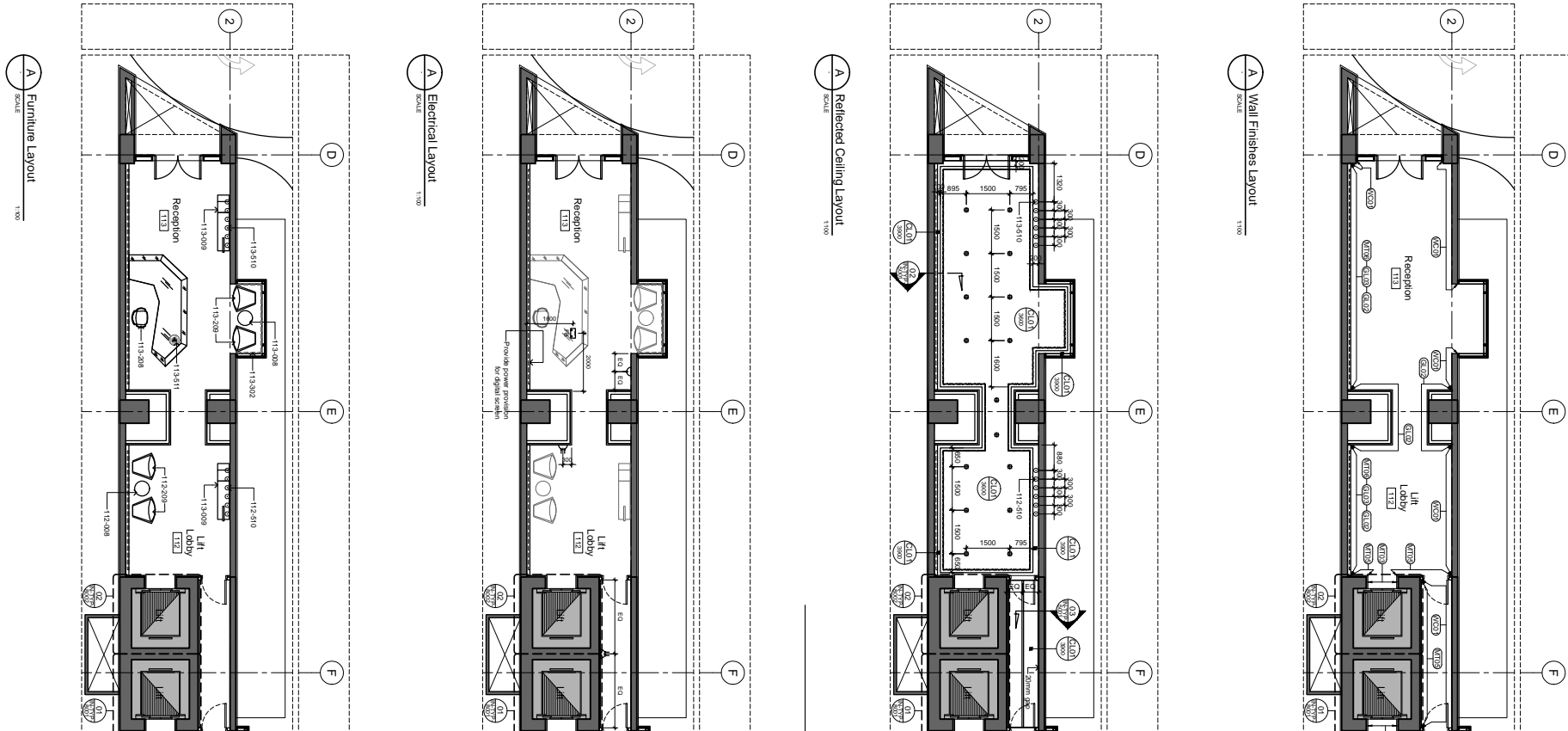
Electrical Legend	
Code	Specification
⏏	Single power outlet to be mounted in partition wall 300mm above finished floor level unless otherwise noted.
⏏	Double power outlet to be mounted in partition wall 300mm above finished floor level unless otherwise noted.
☎	Telephone outlet to be mounted in partition wall 300mm above finished floor level unless otherwise noted.
📶	Data outlet to be mounted in partition wall 300mm above finished floor level unless otherwise noted.
📶	Floor box/power and data set = (2 power, 2 data and 1 telephone requirements. Refer to MEP.)
🔊	Audio jack
📺	Television outlet to be mounted in partition 1400mm above finished floor level unless otherwise noted.
J	Outlet to be mounted in joinery.
F	Outlet to be mounted on floor.
WP	Waterproof outlet
(****)	Outlet to be mounted at (****) height above finished floor level.

Ceiling Legend			
Code	Ceiling type	Code	Ceiling legend
⊖	Ceiling type	⏏	Downlights
	Height from +0.00 floor level	●	Downlights (water proof)
CL01	Flush 12 mm.thk. gypsum plasterboard suspended. Paint finish generally unless noted. Refer to B401 Schedule of Hard Finishes.	⏏	Pendant light
CL02	Flush 12 mm.thk. moisture resistant gypsum plasterboard suspended. Paint finish generally unless noted. Refer to B401 Schedule of Hard Finishes.	⏏	Pendant light
	Shaded area denotes joinery to underside of ceiling	⏏	Pendant light
	Denotes new partitioning	—	Cove Light LED - 3500 K.
	Denotes existing walls / columns	—	Light LED - 3500 K.
		⏏	Supply / Return Air grill (sidethrow)
		⏏	Supply / Return Air grill (downthrow)

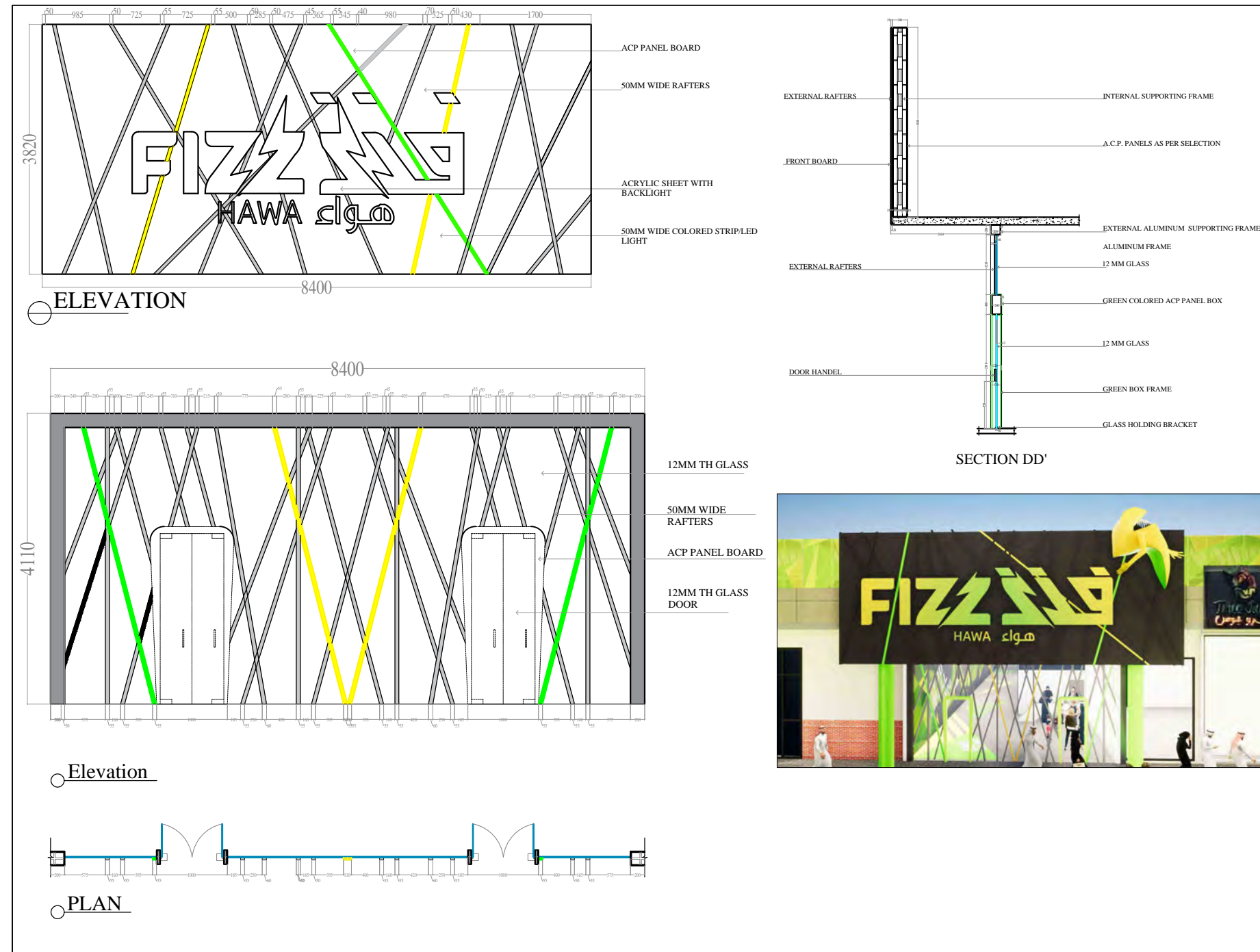
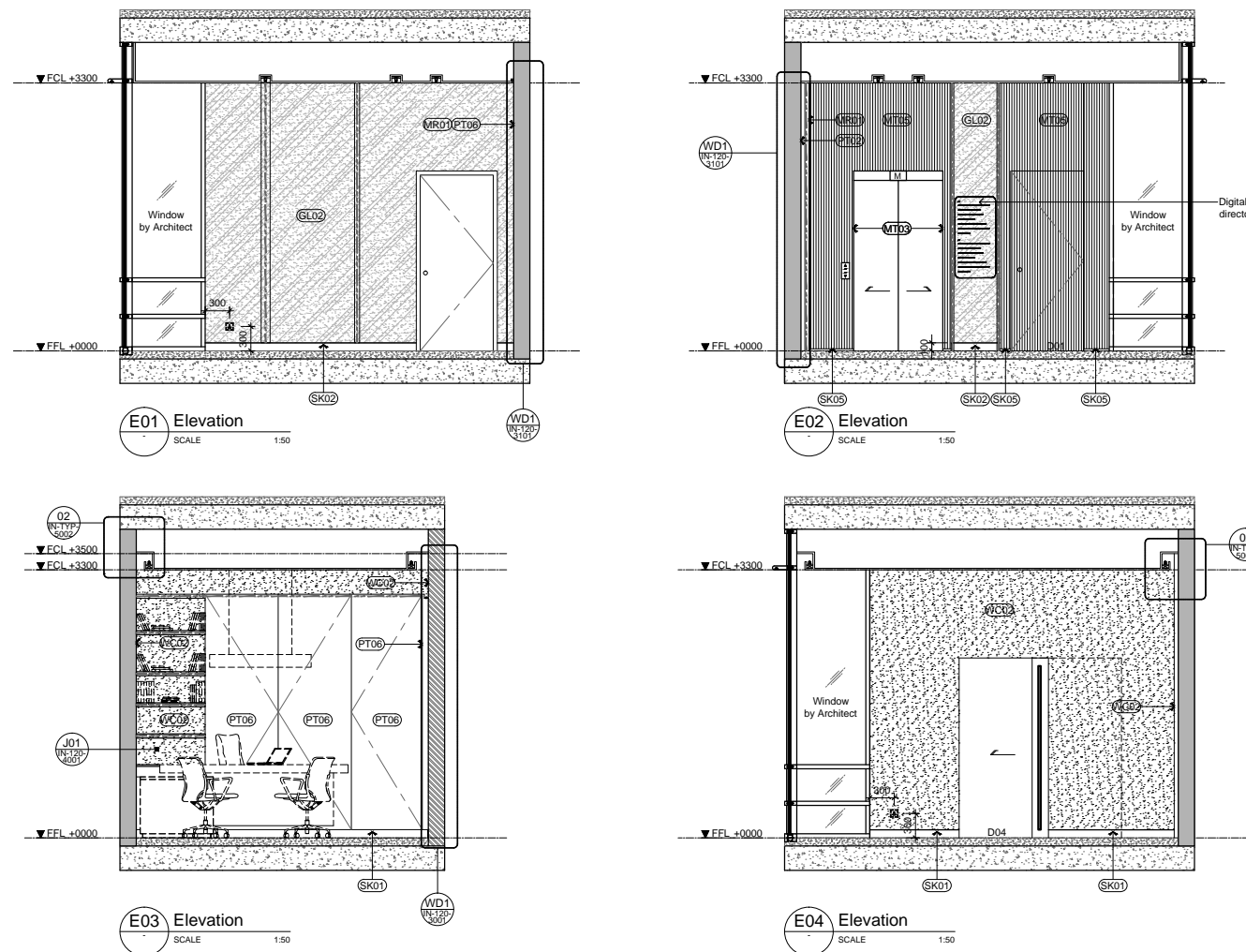
Riyadh, KSA



Project : Khans Residence
Texas, USA



Elevations and Sections



FIZZ HAWA

Riyadh, Saudi Arabia.



Owner: Osool Entertainment Investment Co.



Construction Documentation

Project No :

Scale :N.T.S

Drawn By :MOHAMMED AZAM

Checked By :

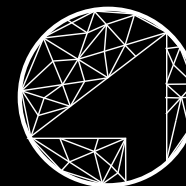
CAD File :MAIN DOOR

0020

17.02.2020



4 ARMS SYNDICATE



4 ARMS SYNDICATE
ARCHITECTS AND DESIGNERS

INDIA

Office No :221, 6-3-252/2 , opp to Taj
Deccan ,Workafella Banjara Hills,
Hyderabad, India, 500034

Tel: +914067425564

Email: info@4armssyndicate.com

QATAR

Al Trif Street ,
Madinath khalifa
north - Doha, Qatar.

Ph: +974-55341375

Email: info@4armssyndicate.com

USA

167 Madison Ave Suite 500, New York, NY
10016.

Ph: +1-646-988-1363

Email: info@4armssyndicate.com